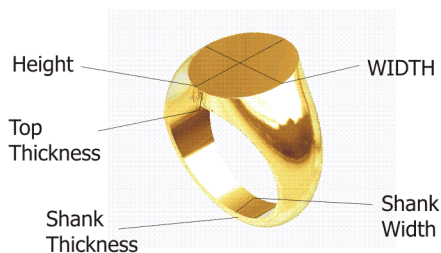


# Actual Sizes of Rings



## Ovals



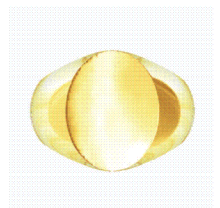
**Woman's Small**  
 Height - 10 mm  
 Width - 8 mm  
 Shank thickness - 1.8 mm  
 Shank width - 2.4 mm  
 Top thickness - 2.3 mm



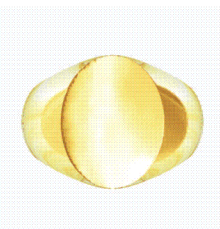
**Woman's Medium**  
 Man's Small  
 Height - 12 mm  
 Width - 10 mm  
 Shank thickness - 1.8 mm  
 Shank width - 3.0 mm  
 Top thickness - 2.5 mm



**Woman's Large**  
 Man's Medium -  
 Height - 14 mm  
 Width - 12 mm  
 Shank thickness - 2.0 mm  
 Shank width - 3.5 mm  
 Top thickness - 2.5 mm



**Man's Large**  
 Height - 16 mm  
 Width - 13 mm  
 Shank thickness - 2.0 mm  
 Shank width - 4.3 mm  
 Top thickness - 2.5 mm



**Man's Extra Large XL**  
 Height - 18 mm  
 Width - 14 mm  
 Shank thickness - 2.0 mm  
 Shank width - 4.8 mm  
 Top thickness - 3.0 mm



**Man's Extra, Extra Large XXL**  
 Height - 19 mm  
 Width - 16 mm  
 Shank thickness - 2.0 mm  
 Shank width - 5.3 mm  
 Top thickness - 3.0 mm

## Cushions



**Woman's Small**  
 Height - 9 mm  
 Width - 8 mm  
 Shank thickness - 1.5 mm  
 Shank width - 2.4 mm  
 Top thickness - 2.5 mm



**Woman's Large**  
 Man's Medium -  
 Height - 12 mm  
 Width - 10 mm  
 Shank thickness - 2.0 mm  
 Shank width - 3.5 mm  
 Top thickness - 2.5 mm



**Man's Large**  
 Height - 13.8 mm  
 Width - 13 mm  
 Shank thickness - 2.0 mm  
 Shank width - 4.3 mm  
 Top thickness - 2.5 mm



**Man's Extra, Extra Large XXL**  
 Height - 18 mm  
 Width - 15 mm  
 Shank thickness - 2.0 mm  
 Shank width - 5.3 mm  
 Top thickness - 3.0 mm

All dimensions are approximate as some variation will occur in the manufacturing process.

 Citypride, Ltd.

411 Cottman Street  
 Jenkintown, PA 19046  
 888-679-8888  
[www.cityprideltd.com](http://www.cityprideltd.com)